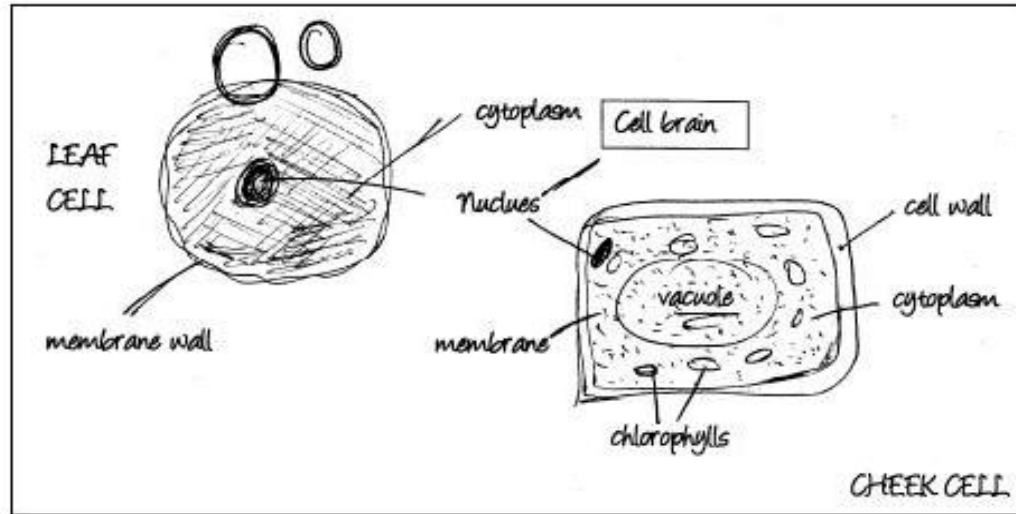


Plant and Animal Cells.

Task:

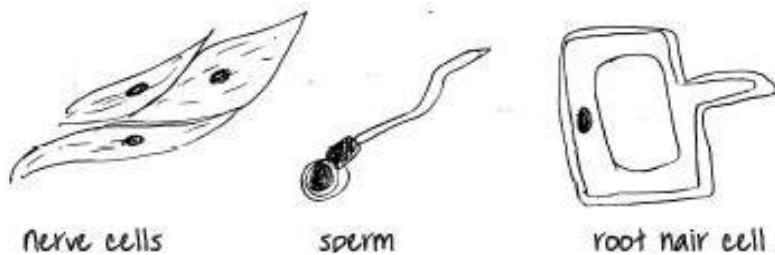
1. Take a red pen & correct this piece of student work about plant and animal cells.



Plant cells usually irregular in shape. They have a cell wall that controls what goes in and out of the cell, and to give them their shape. We use methylene blue to stain plant cells.

To make a wet mount slide you put a thin specimen on a slide and a drop of stain. Then you drop that little glass square thing on it and look at the slide under the highest magnification first, and then on the middle and low power.

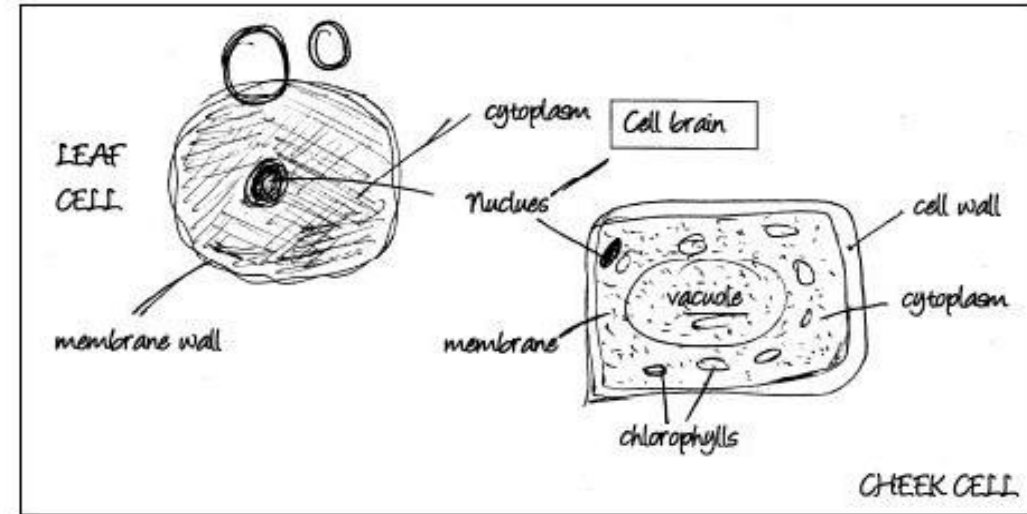
Here are three animal cells.



Plant and Animal Cells.

Task:

1. Take a red pen & correct this piece of student work about plant and animal cells.



Plant cells usually irregular in shape. They have a cell wall that controls what goes in and out of the cell, and to give them their shape. We use methylene blue to stain plant cells.

To make a wet mount slide you put a thin specimen on a slide and a drop of stain. Then you drop that little glass square thing on it and look at the slide under the highest magnification first, and then on the middle and low power.

To work out the magnification you add the eye piece to the objective lens

