

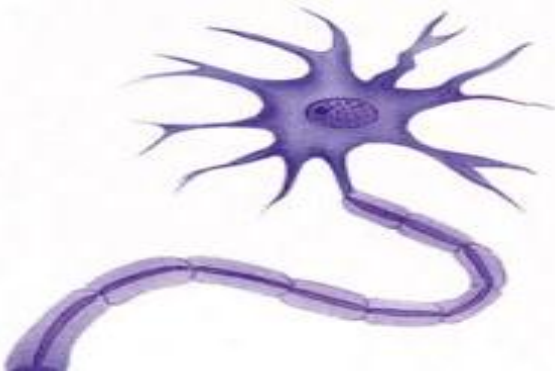
Bacteria Cell

- Has a tail so it can move around
- Has tentacles called pili to help it stick to things
- Does not have a nucleus
- Some are good and some are bad



Red Blood Cell

- Carries oxygen around the body
- Contains a chemical called haemoglobin
- Does not have a nucleus



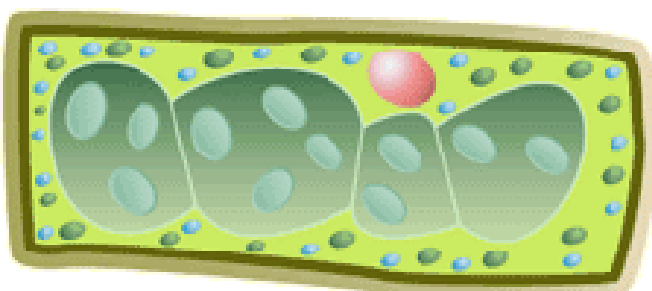
Neurone

- Is part of the nervous system
- Transports signals around the body
- Has many connection points to send and receive signals quickly



Sperm Cell

- Has a tail so it can swim
- Has a nucleus, but only half the normal amount of DNA



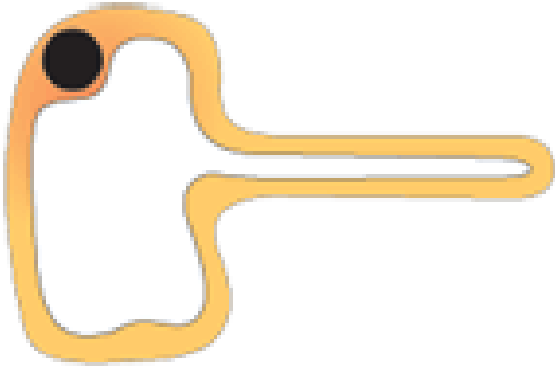
Leaf Cell

- Contains lots of chloroplasts to absorb light energy
- Has a cell wall for support



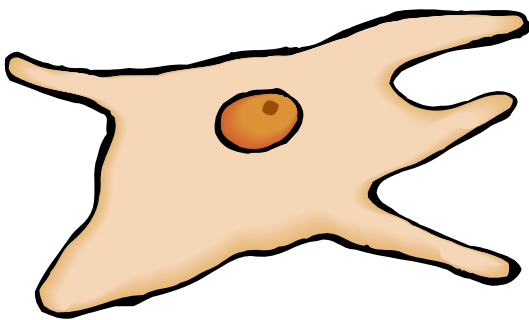
Pollen

- Is surrounded by a protective cell wall
- Is spiky so it can stick to insects



Root cell

- Does not contain any chloroplasts
- Has a long extension to absorb lots of water
- Has a large vacuole to store water



White Blood Cell

- Contains a nucleus
- Its job is to protect the body from infection
- It swallows bacteria